



UNiflood

BCP260 24xLED-HP/WW-3000 24V NB

24 pcs - LED High Power

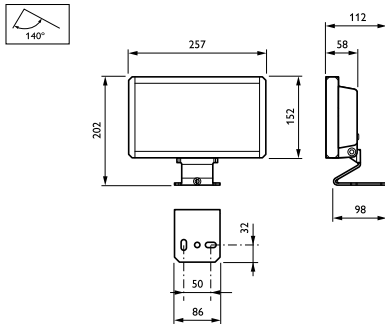
UNiflood is a mono-color LED floodlighting fixture designed for a wide range of architectural floodlighting applications. Available in a choice of whites and other light colors, it offers reliable quality and outstanding performance. The fixture's advanced LED technology creates a vivid and harmonious ambience at night whilst also saving energy.

Product data

General Information	
Number of light sources	24 [24 pcs]
Lamp family code	LED-HP [LED High Power]
Lamp colour code	Warm white
Embedded control	No [-]
Protection class IEC	Safety class III (III)
Flammability mark	F [For mounting on normally flammable surfaces]
Outdoor optic type	Narrow beam
Operating and Electrical	
Input voltage	24 V
Approval and Application	
Ingress protection code	IP65 [Dust penetration-protected, jet-proof]
Mech. impact protection code	IK06 [1 J]
Initial Performance (IEC Compliant)	
Lamp colour temperature	3000 K

Initial input power	42 W
Application Conditions	
Ambient temperature range	-20 to +50 °C
Product Data	
Full product code	911401600491
Order product name	BCP260 24xLED-HP/WW-3000 24V NB
Order code	911401600491
Numerator – quantity per pack	1
Numerator – packs per outer box	1
Material no. (12NC)	911401600491
Net weight (piece)	2.800 kg

Dimensional drawing



BCP260 UNiflood

